

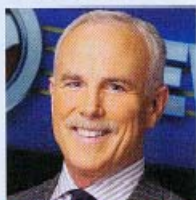
BOSTON COMMON

SPRING 2006

INSIDER
TALK OF THE TOWN

NOW THAT THE BIG DIG IS DUG, WHAT SHOULD BOSTON FOCUS ON NEXT?

"I hope we continue enhancing our public spaces. When you look at improvements to the Boston Common and other spots, [you see that] the city and mayor have done so much in recent years. Now we have a grand opportunity to do something great."



RANDY PRICE



COLLETTE PHILLIPS

"The next big focus for Boston should be education, youth mentoring, and youth empowerment. It is so important for the next generation to be highly educated and technologically prepared to compete in today's global environment."

"It's time to get cracking on unfinished mass transit projects like the Green Line extension to Somerville and major investments in our commuter rail system. We need rail extensions to Cape Cod, Fall River, and New Bedford; to Nashua and Manchester; and much improved service to Worcester, Fitchburg, and Springfield. And it is time to finally connect North and South Stations by rail."



MICHAEL DUKAKIS

"I'LL START SMALL—KEEP THE ROAD EQUIPMENT OUT AND FILL IN THE POTHOLES THAT ARE RUINING MY CAR'S SHOCK ABSORBERS! I'D ALSO BE SO HAPPY IF THE CITY WOULD STOP THE SATURDAY MORNING TRASH COLLECTION. IT'S THE SIMPLE THINGS IN LIFE THAT CAN MAKE ALL THE DIFFERENCE!"

"As the Big Dig is completed, we should work to ensure that residents and visitors will be able to access our parks and open spaces, including the Rose Kennedy Greenway and Boston's waterfront and harbor islands. Let's be sure that the Boston of the twenty-first century knits together our green spaces with our blue waters."



VIVIEN LI

"Signage in and around town needs some major improvement. It's non-existent in many places and misleading at best! Have you tried getting to Albany Street from the Mass Pike eastbound recently? Or to Storrow Drive from Arlington Street in the Back Bay? And we wonder where the term 'road rage' comes from."

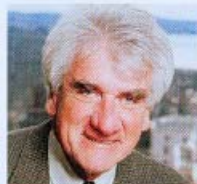


SUSAN WORNICK



CATERINA BANDINI

"Boston will continue to be a hotbed of development over the next ten years, and the focus of that activity should center



TOM O'NEILL

on the Seaport District and creating a new neighborhood for residents to work, live, and play. However, we also need to remain attentive to the next wave of development. There are several major development projects that will enliven this city and need our support—the Rose Kennedy Greenway, the Bulfinch Triangle, and the corridor linking Boston's South End to Roxbury and Dorchester."